

AER-CUSHION®

INDOOR WALL PADS



Specifications

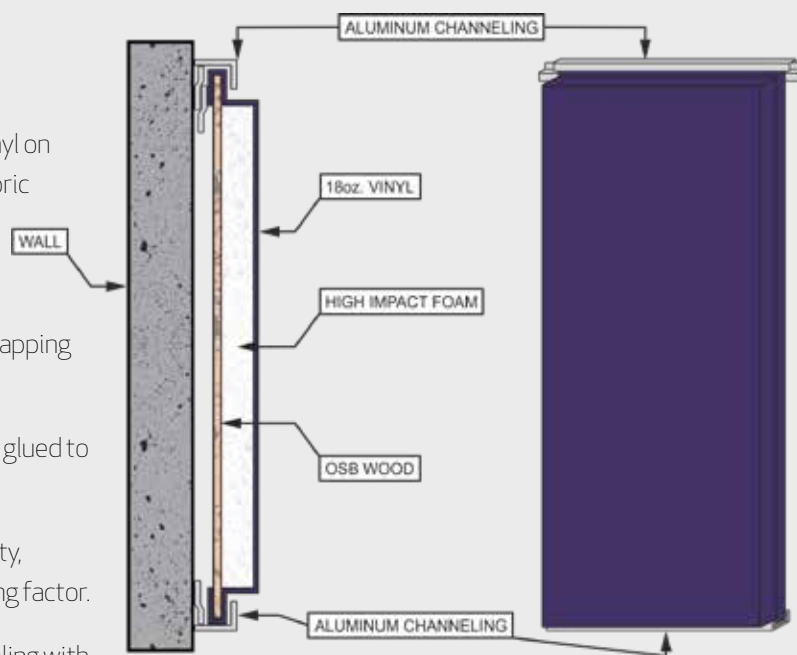
Backing: 7/16" Oriented Strand Board (OSB) Wood

Vinyl Covering: 18 oz./sq. yd. fully COATED fire-retardant vinyl on base fabric scrim of 1,000 denier x 1,300 denier polyester. Fabric meets following tests: Tear Strength Tests: Warp 100 lbs., Fill 100 lbs., Grab Tensile Strength: Warp 410 lbs., Fill 410 lbs., Weft Insertion: 18x17. Vinyl compounded with UV Inhibitors and Mold Inhibitors. Cold Crack: Minus 40 degrees F°. Vinyl Wrapping is fastened only on backside using stainless steel staples.

Filler Foam: 2" thick polyurethane high impact foam securely glued to 7/16" OSB Wood

Adhesive: Synthetic resin based demonstrating high flexibility, excellent water and heat/cold resistance, and superior bonding factor.

Attachment: Anodized aluminum standard shallow "J" channeling with "Z" channeling.



800-823-7356
AerFloSports.com