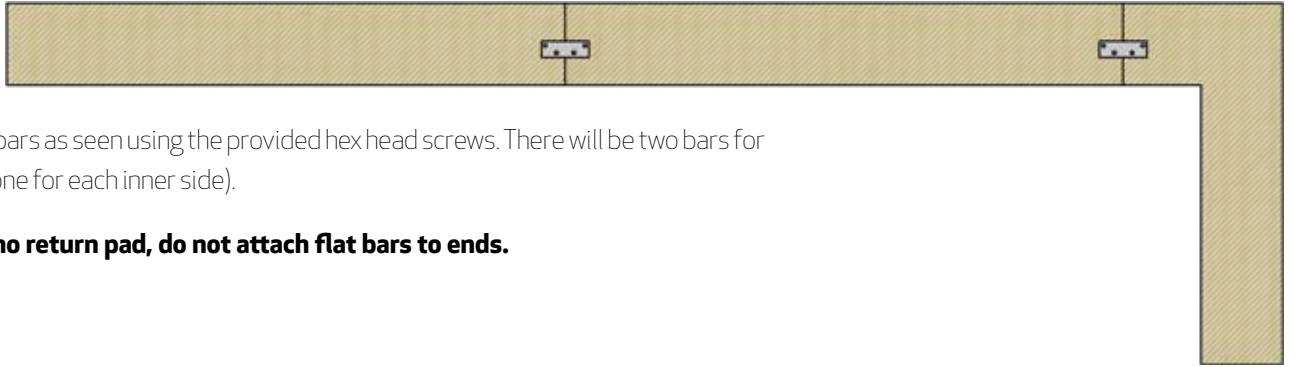


WOOD BACKED U-SHAPE PAD INSTALLATION GUIDE

Inside view for flat bar attachment



Attach flat bars as seen using the provided hex head screws. There will be two bars for each joint (one for each inner side).

If there is no return pad, do not attach flat bars to ends.

Back view for EMT strap installation

Attach EMT straps as seen.

Each strap is attached by one washer and one hex screw.

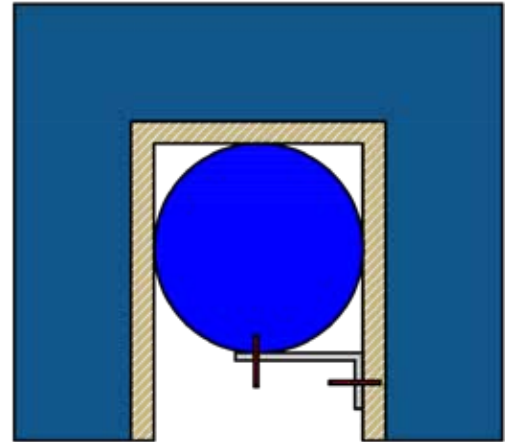
EMT strap size and amount varies according to diameter of railing.



Inner view of end pad

Attach L brackets as seen using the two hex screws provided. The end pad may be either the final horizontal rail pad or a return pad.

This will be the last step as it will lock your system in place!



Hardware Contents

The hardware to mount your padding system breaks down as follows:

- **For flat pads** EMT straps w/ one washer and one screw
- **For U-shaped pads** Two flat bars for each joint and four screws per flat bar.
- **Two L brackets** will be included for each end pad for locking the system in place.