

STADIUM PAD VINYL COVERING



Specifications

Vinyl Covering: 18oz./sq. yd. fully COATED vinyl on base fabric scrim of 1000 denier x 1300 denier polyester. Vinyl is wrapped fully around plywood and foam to fully cover front, back, and all edges. Full vinyl wrapping is fastened only on backside using stainless steel staples. Color of vinyl is to selected from fabric manufacturers standard colors.

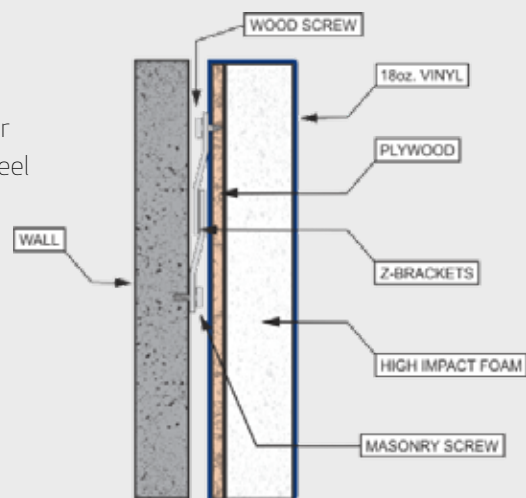
Fabric meets following tests:

- Tear Strength Tests: Warp 100 lbs., Fill 100 lbs.,
- Grab Tensile Strength: Warp 410 lbs., Fill 410 lbs.,
- Weft Insertion: 18 x 17. Vinyl compounded with UV inhibitors and mold inhibitors.
- Cold Crack: Minus 40 degrees F°

Filler Foam: 3" thick polyurethane high impact foam

Adhesive: Synthetic resin based demonstrating high flexibility, excellent water and heat/cold resistance, and superior bonding factor.

Attachment: Extruded aluminum profile, 2 1/2" x 1/8" thickness, attached to wall panel using masonry screws, and to pad's plywood backing using wood screws. Hardware not included.



800-823-7356
AerFloSports.com