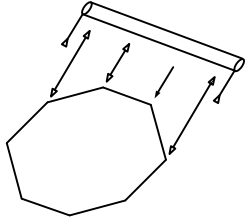
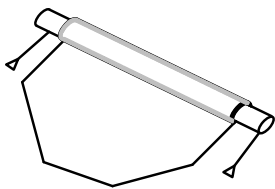


AER-FLO®

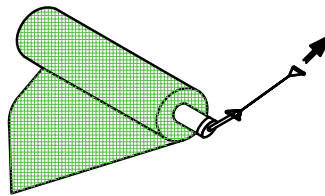
ASSEMBLY OF THE WIND-WEIGHTED TARP INSTALLER



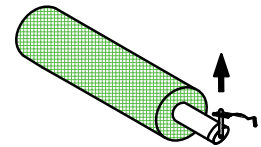
To roll the baseball tarp onto the installer, place the pipe so that it is centered on the tarp. Roll the pipe onto the tarp two or three turns by hand.



Then the tarp can be rolled onto the installer by pulling the handles. To install the tarp, place it in the proper starting position and pull on the two handles until it rolls into place.



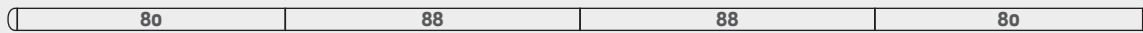
To roll or unroll the tarp, pull from the upper hand hold.



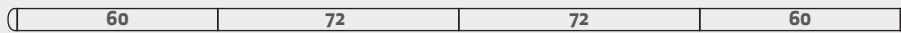
To lift and carry the tarp, grab the lower hand hold with the bar between the fingers.



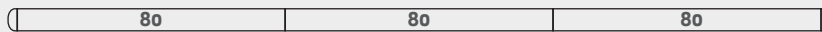
Item #3730 for 30 foot tarp



Item #3726 for 26 foot tarp



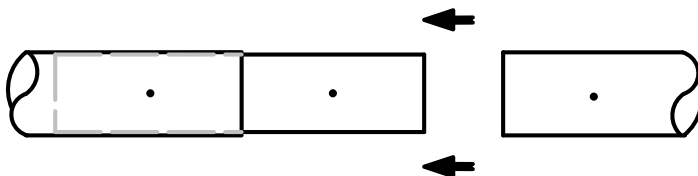
Item #3720 for 20 foot tarp



Item #3718 for 18 foot tarp



Item #3712 for 12 foot tarp (non-stock)



We recommend a cordless screwdriver on slow speed with a #3 Philips bit to install the screws to insure enough torque is developed to fully seat the screws without stripping the screw heads.

Slide alum pipe spline halfway into installer. Align screw holes. Insert self-taping screws (2) and tighten. Slide matching section over spline. Align screw holes. Insert screws and tighten.

800-823-7356
AerFloSports.com

